



STATE TRANSPORTATION BOARD

OCTOBER 2023 COMMITTEE MEETINGS

October 18, 2023



STATE TRANSPORTATION BOARD

Program Delivery Committee

October 18, 2023



Overview of GDOT Cost Estimates

GDOT Bid Evaluation & Cost Increases in GDOT Design-Bid-Build Letting Projects

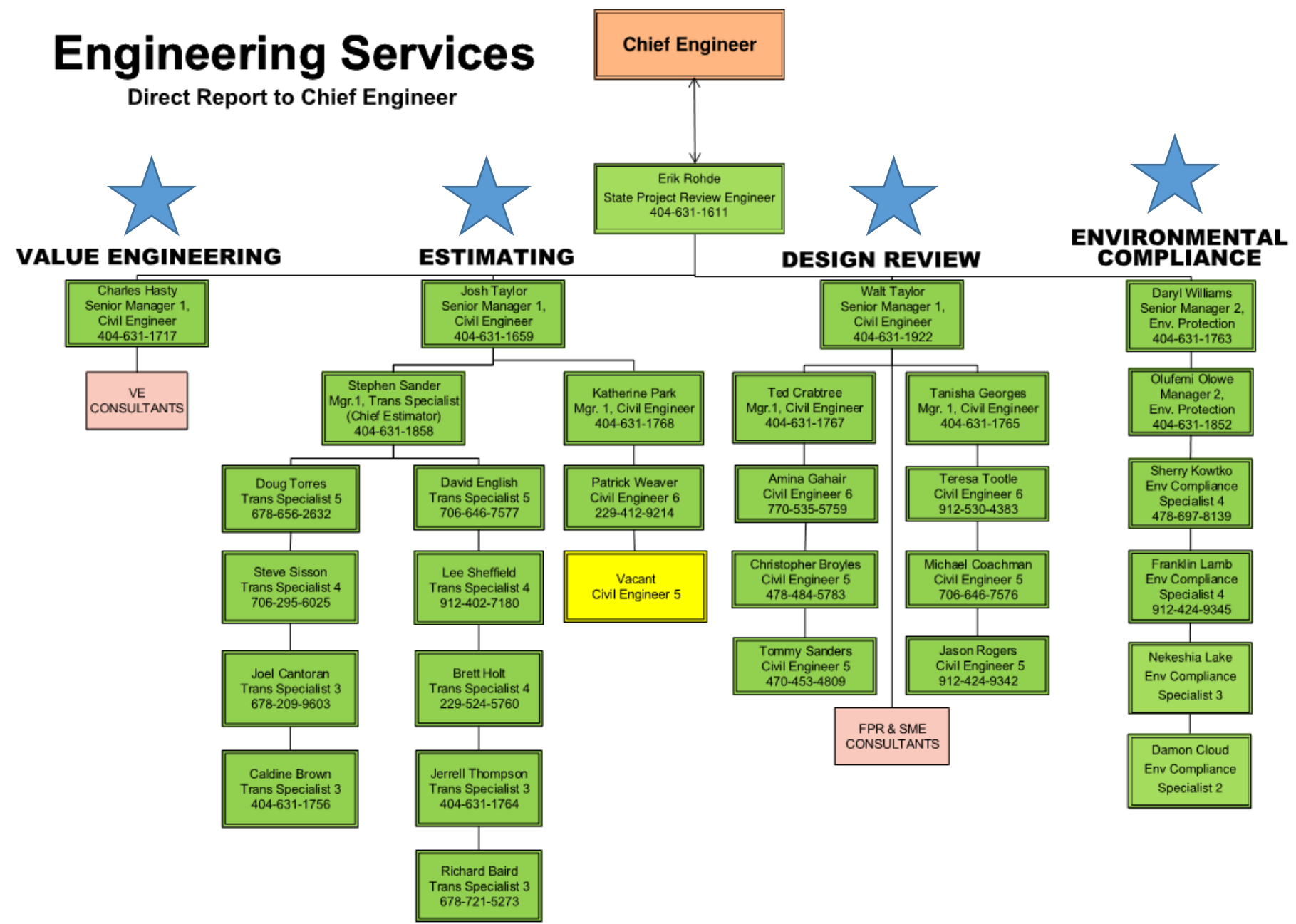
Erik Rohde, P.E.

State Project Review Engineer

October 18, 2023

Engineering Services

Direct Report to Chief Engineer



Policy 2425-1 Bid Evaluation

Defines internal procedures used to evaluate contractor bids for GDOT lettings

Establishes Engineer’s Estimate as benchmark for comparing all bids

Establishes Estimating Committee

- Reviews Engineer’s Estimates and meets prior to each letting to accept the estimates
- Evaluates Contractor Bids after each letting and meets to finalize recommendations to the Bid Review Committee – attends Bid Review Committee meetings

Establishes Bid Review Committee

- Meets after each letting to review Estimating Committee recommendations
- Provides recommendations and supporting documentation to the Commissioner regarding the award, rejection, postponement or deferral of each project

| Estimating Committee | Bid Review Committee |
|---|---|
| State Construction Engineer (Chair) | Division Director of Construction (Chair) |
| State Maintenance Engineer | Chief Engineer |
| State Transportation Office Administrator | Deputy Commissioner |
| State Project Review Engineer | Division Director of Engineering |
| GDOT Chief Estimator (non voting) | Division Director of Permits & Operations |

Letting Cost Increases Covered

By Project Type – Awarded Projects Low Bid and GDOT’s Engineer’s Estimate

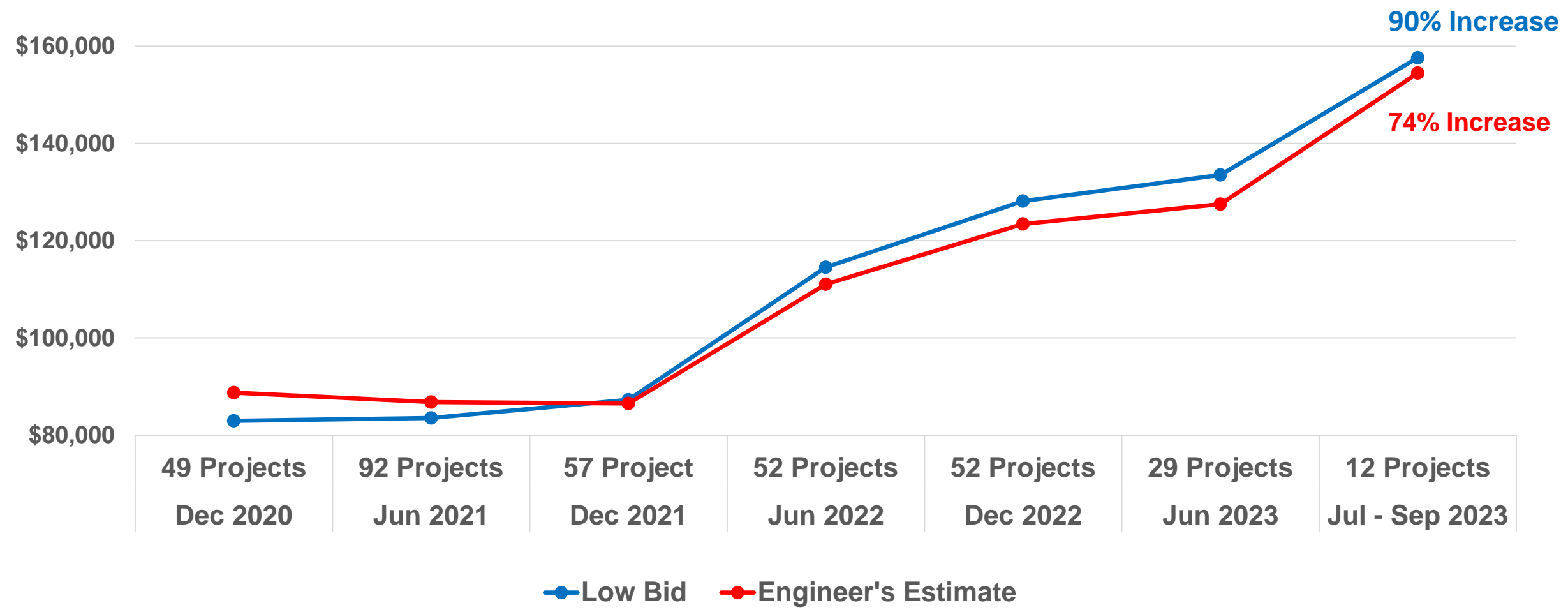
- Asphalt Resurfacing
- Roundabouts
- Bridge Replacements
- Widening & New Location

Highlight Select Bid Items - Weighted Average Low Bid Price Increases

Highlight Select Work Components – Increases in Engineer’s Estimates

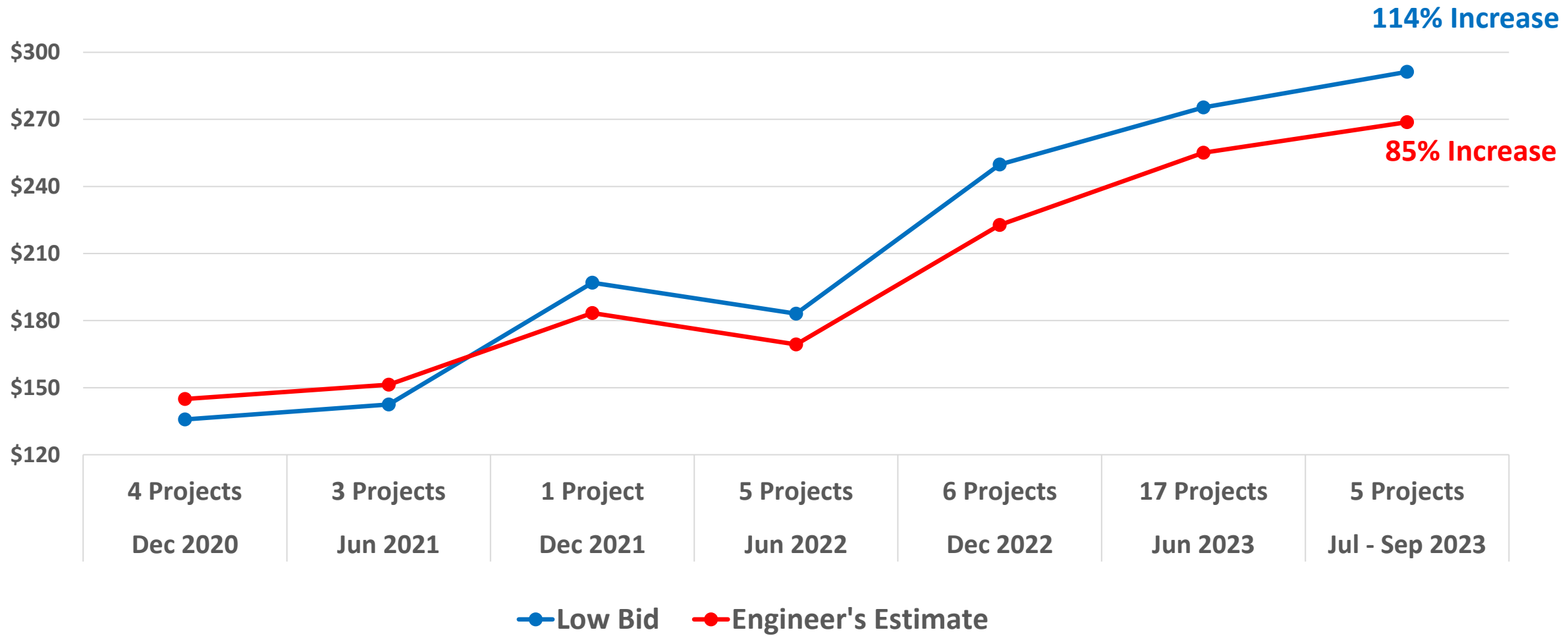
Asphalt Resurfacing – Total Project Cost Increases

Cost Per 12-foot Lane Mile for 6-Month Period Ending – Interstate Projects Excluded



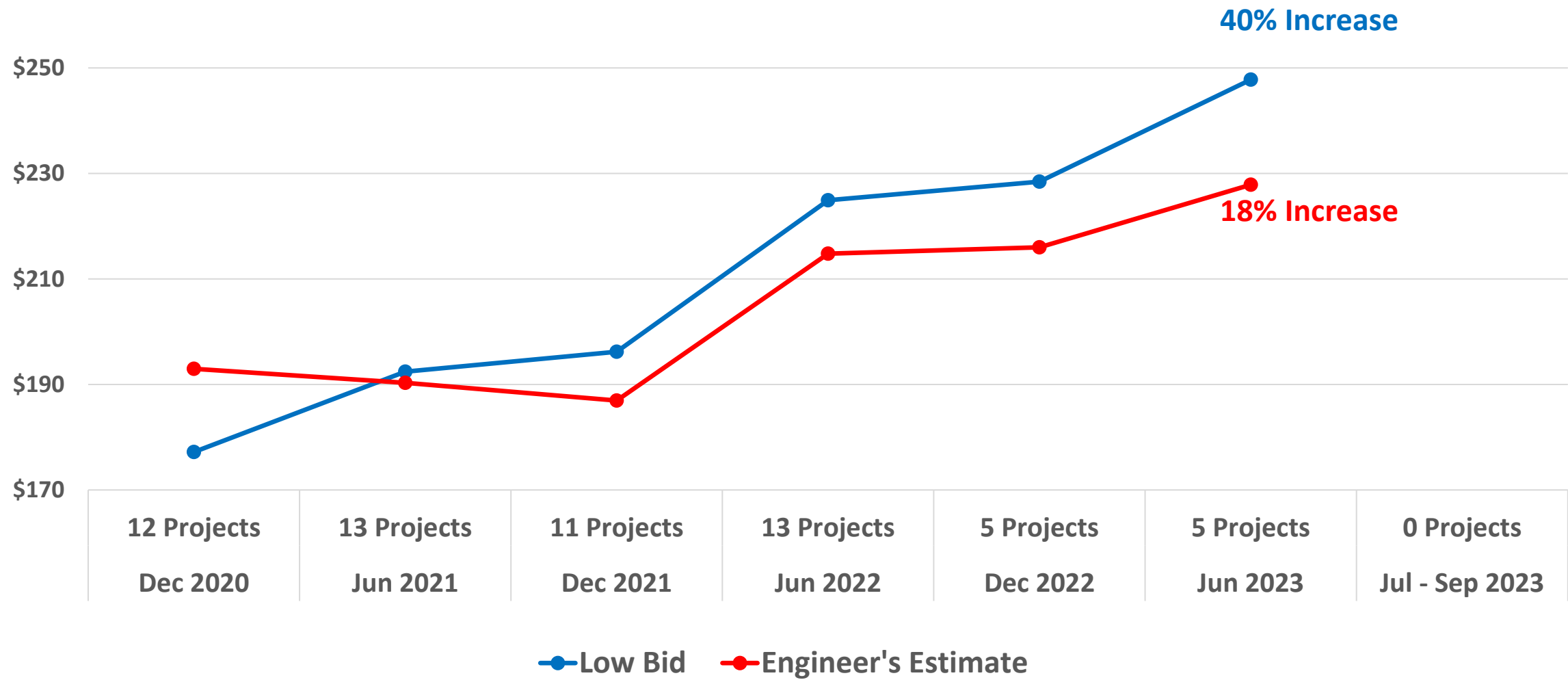
Roundabouts – Total Project Cost Increases

Cost Per Square Yard of Constructed Impervious Surface for 6-Month Period Ending



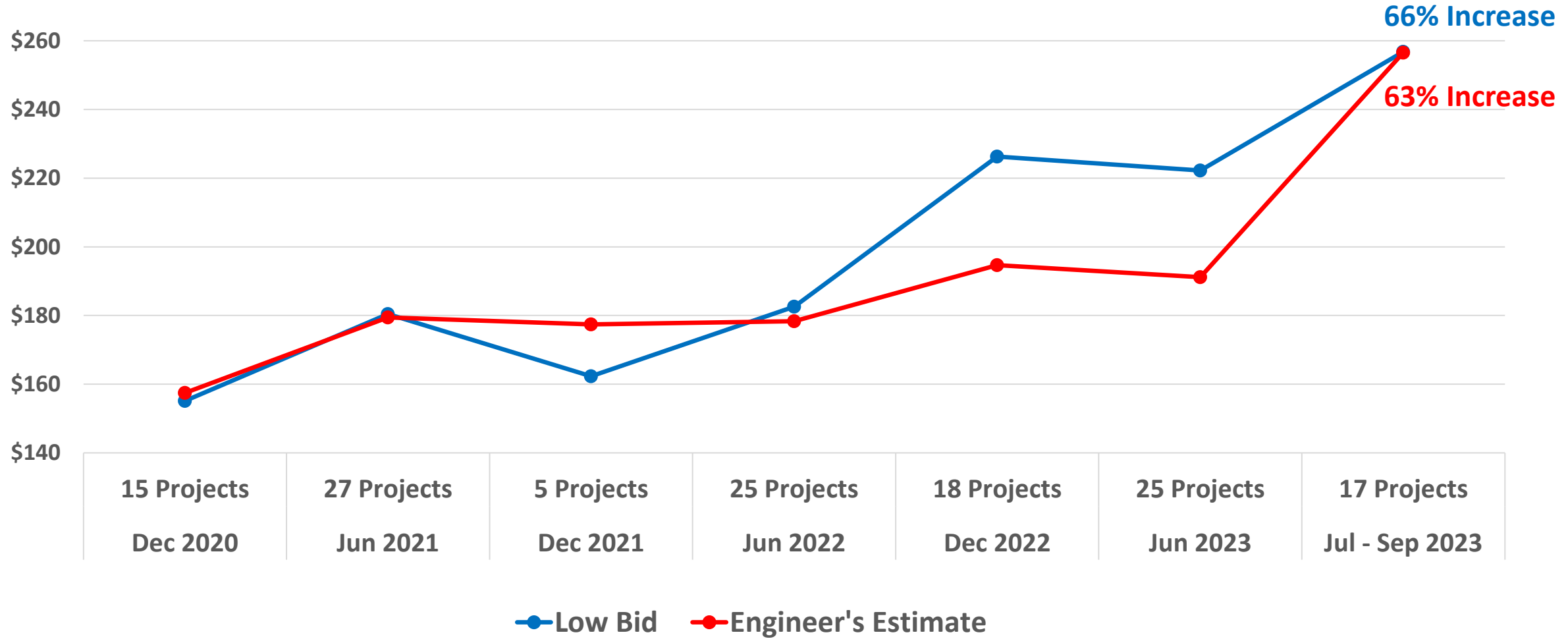
Low Impact Bridge Program (LIBP) – Bridge Cost Increases

Bridge Construction Items Cost Per Square Foot of Bridge Deck for 6-Month Period Ending



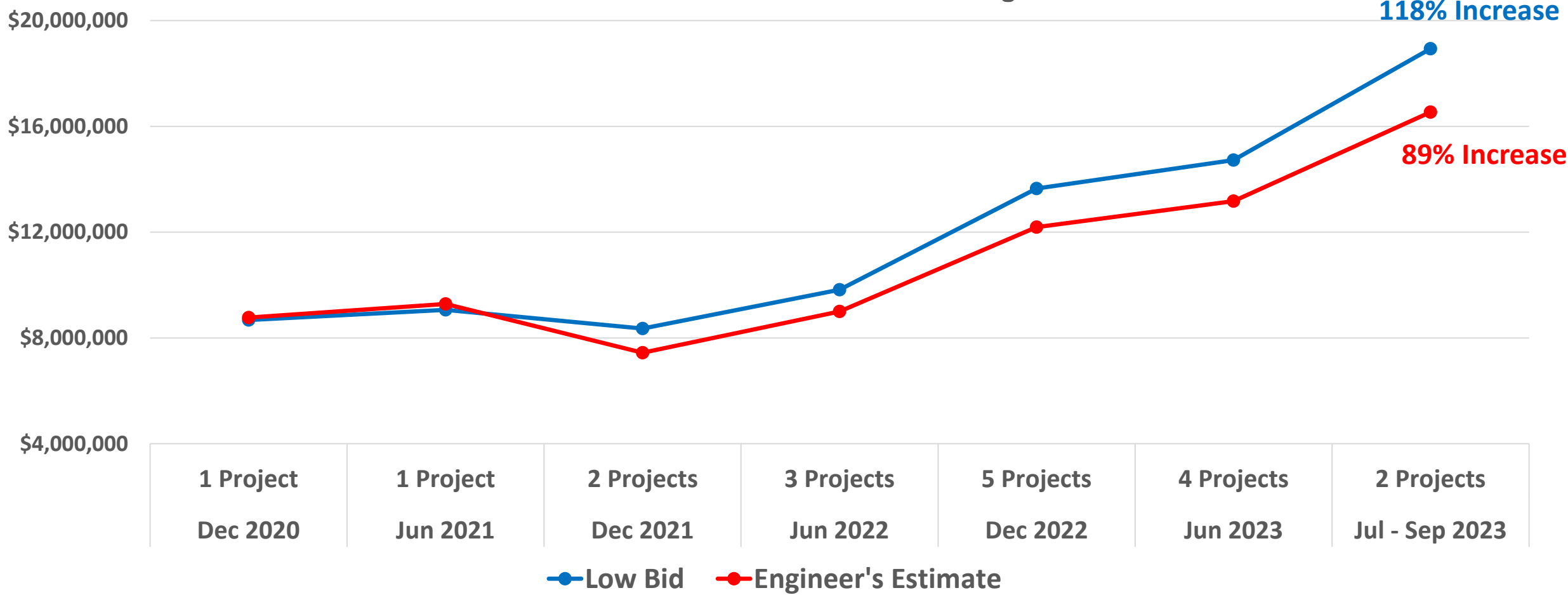
Non-LIBP Bridge Replacement – Bridge Cost Increases

Bridge Items Cost Per Square Foot of Bridge Deck for 6-Month Period Ending



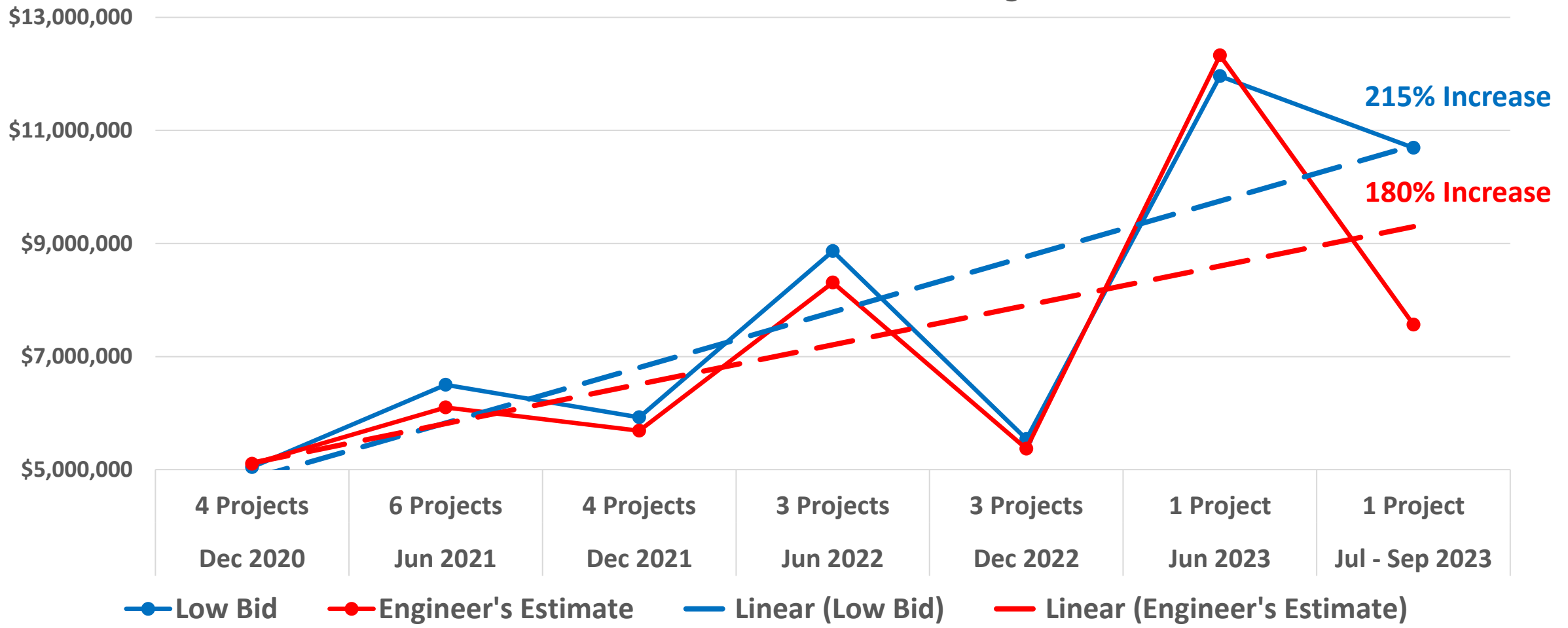
Urban Widening – Total Project Cost Increases

Cost Per Mile for 6-Months Ending



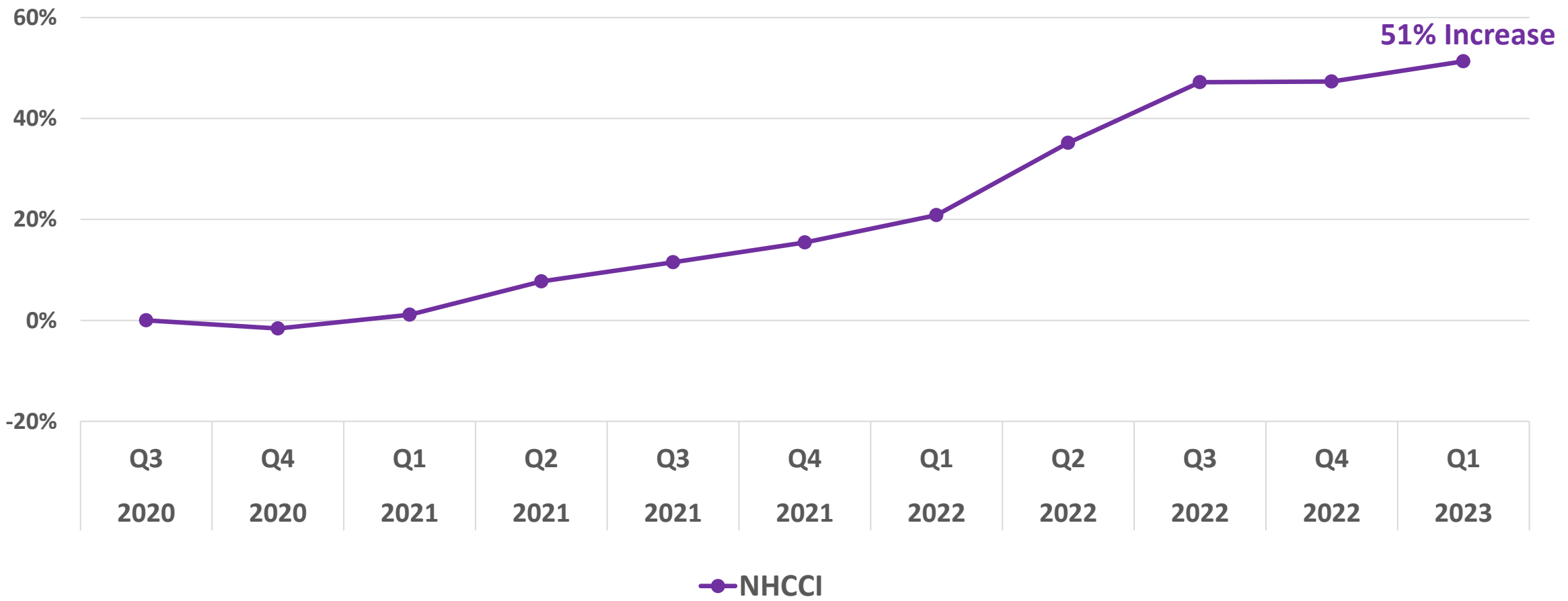
Rural Widening & New Location – Total Project Cost Increases

Cost Per Mile for 6-Months Ending



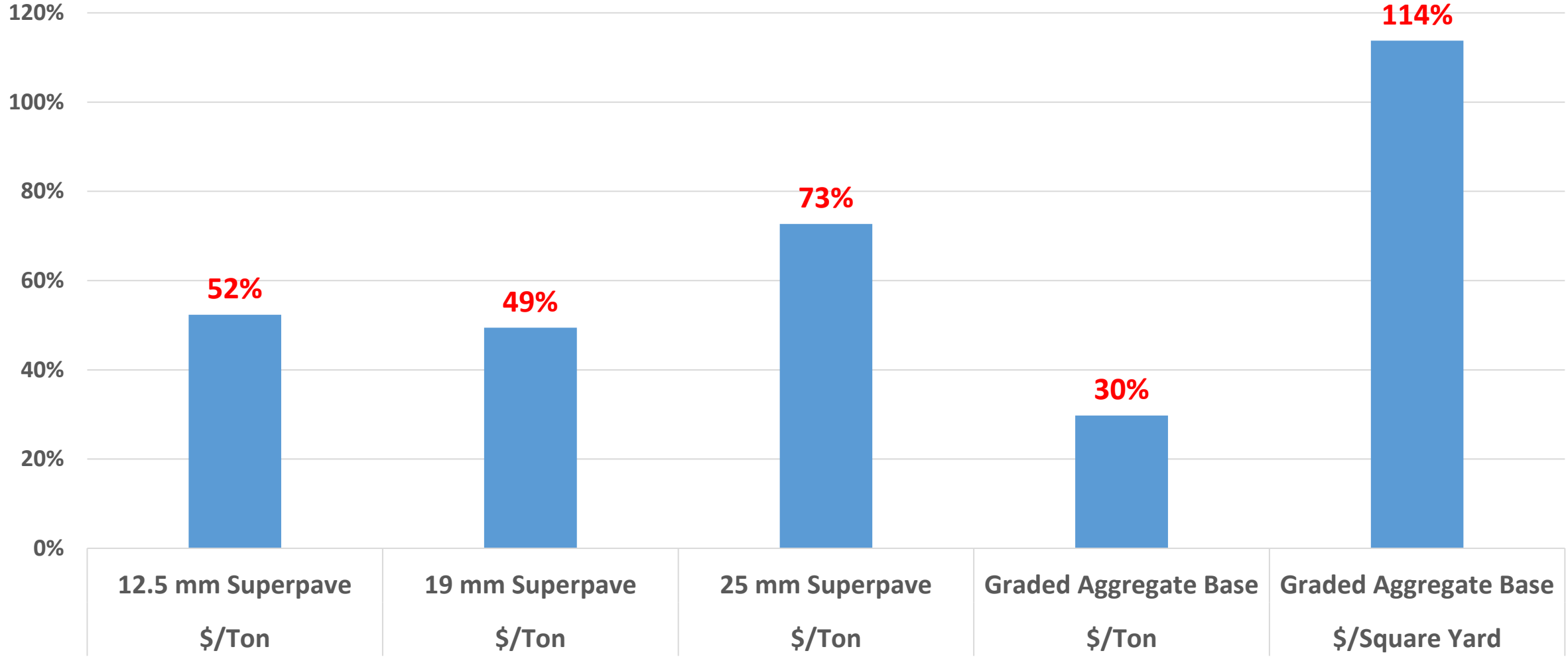
National Highway Construction Cost Index (NHCCI)

Percentage Increases – 3rd Quarter of 2020 thru 1st Quarter of 2023



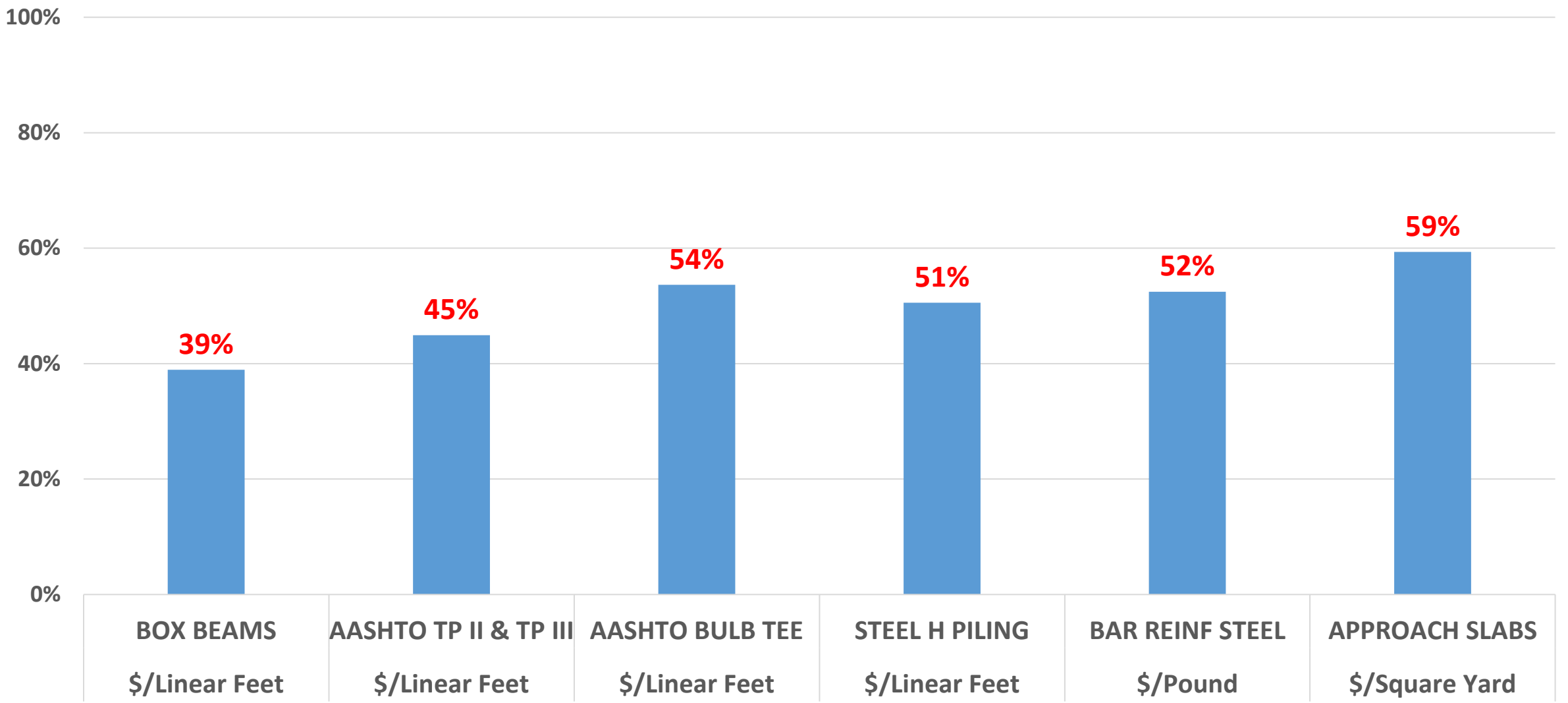
Hot Mix Asphalt Pavement and Graded Aggregate Base

Weighted Average Low Bid Increases – Jul-Dec 2020 thru Jan-Jun 2023



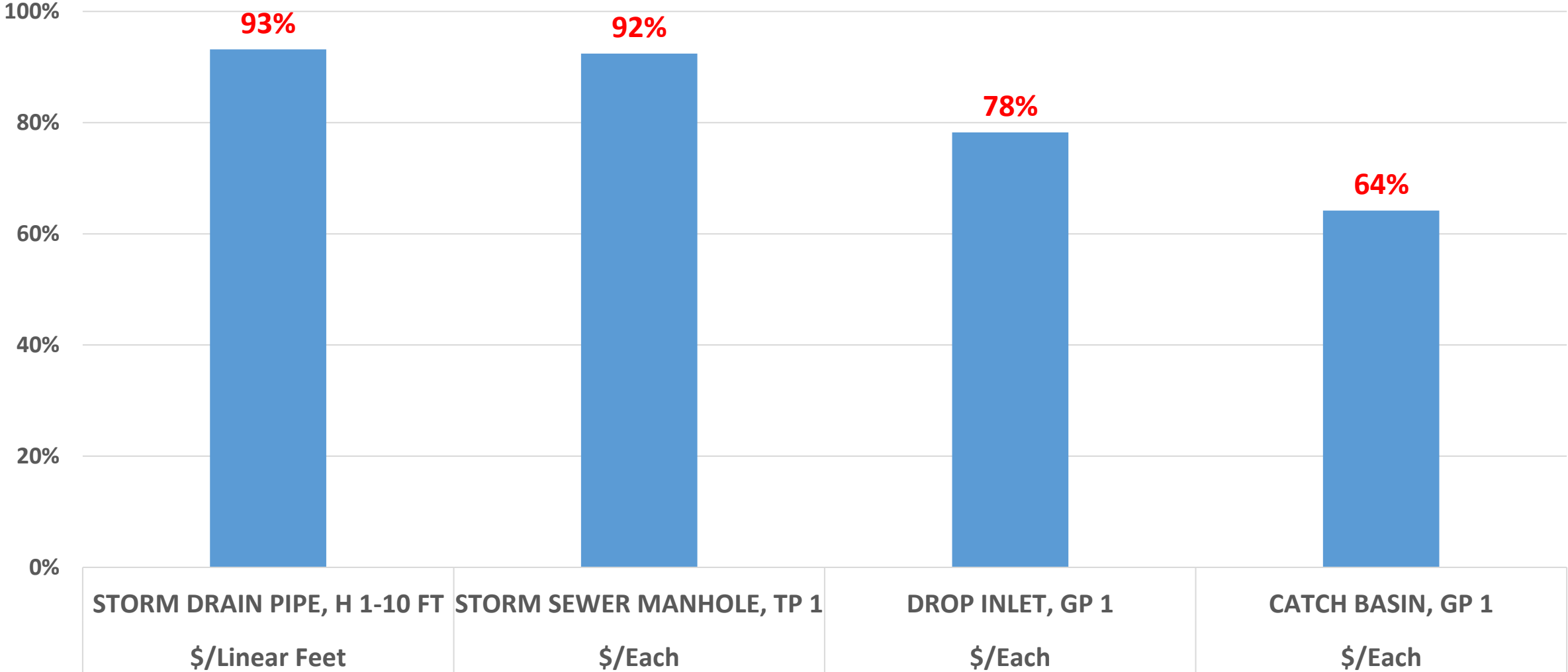
Bridge Construction

Weighted Average Low Bid Increases – Jul-Dec 2020 thru Jan-Jun 2023



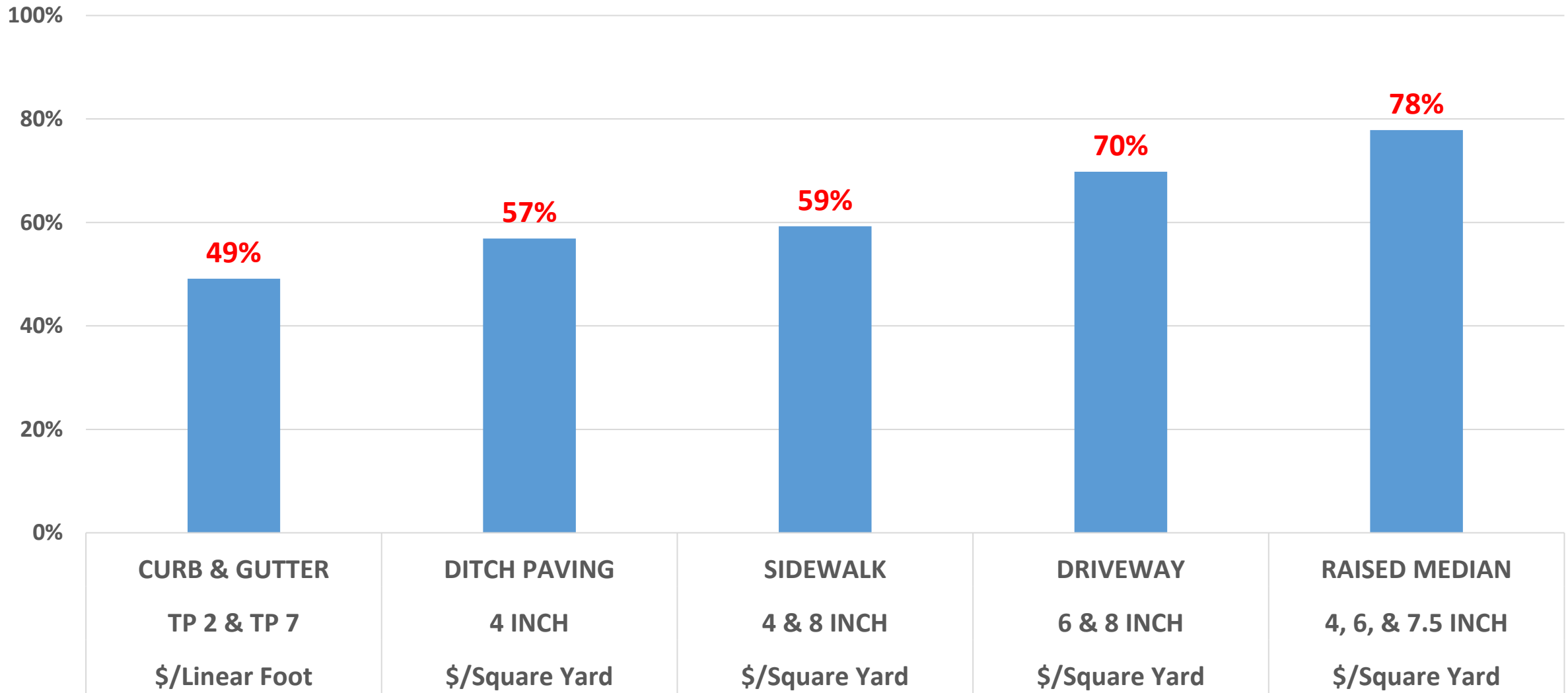
Storm Drainage

Weighted Average Low Bid Increases – Jul-Dec 2020 thru Jan-Jun 2023



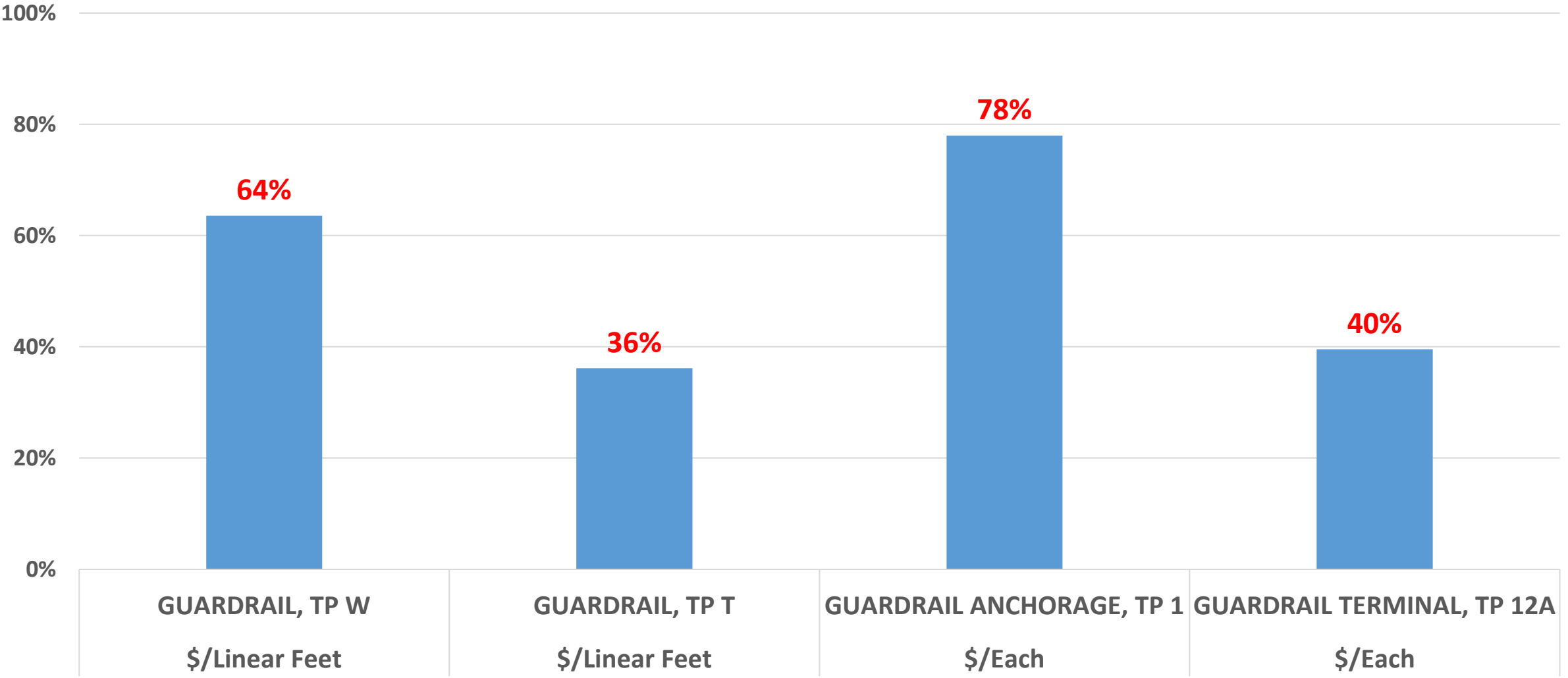
Concrete Flatwork

Weighted Average Low Bid Increases – Jul-Dec 2020 thru Jan-Jun 2023



Guardrail

Weighted Average Low Bid Increases – Jul-Dec 2020 thru Jan-Jun 2023



Engineer's Estimate - Component Cost Adjustments Since June 2020

| Labor | Overall Increase | 2023 Trend |
|----------------------|------------------|------------|
| Foreman | 3% | Steady |
| Operators | 11% | Steady |
| Laborers | 31% | Steady |
| Concrete Finisher | 27% | Steady |
| Concrete Form Setter | 29% | Steady |

| Trucking | Overall Increase | 2023 Trend |
|------------------|------------------|------------|
| Milling & Paving | 24% | Steady |
| Earthwork | 24% | Steady |

| Equipment | Overall Increase | 2023 Trend |
|------------------|------------------|------------|
| Milling & Paving | 35% | Increasing |
| Earthwork | 81% | Increasing |
| Cranes | 110% | Increasing |

| Aggregate | Overall Increase | 2023 Trend |
|-----------|------------------|------------|
| Pavement | 28% | Increasing |
| GAB | 52% | Increasing |

| Concrete | Overall Increase | 2023 Trend |
|-------------------|------------------|------------|
| Bridge Structures | 16% | Steady |
| Box Culverts | 16% | Steady |

| Miscellaneous | Overall Increase | 2023 Trend |
|--------------------------|------------------|------------|
| Raw Steel | 63% | Steady |
| Reinforced Concrete Pipe | 28% | Steady |
| Liquid Asphalt Cement | 43% | Decreasing |

Questions?

THANK
YOU



STATE TRANSPORTATION BOARD

Committee of the Whole

October 18, 2023



Rivian and Hyundai Update

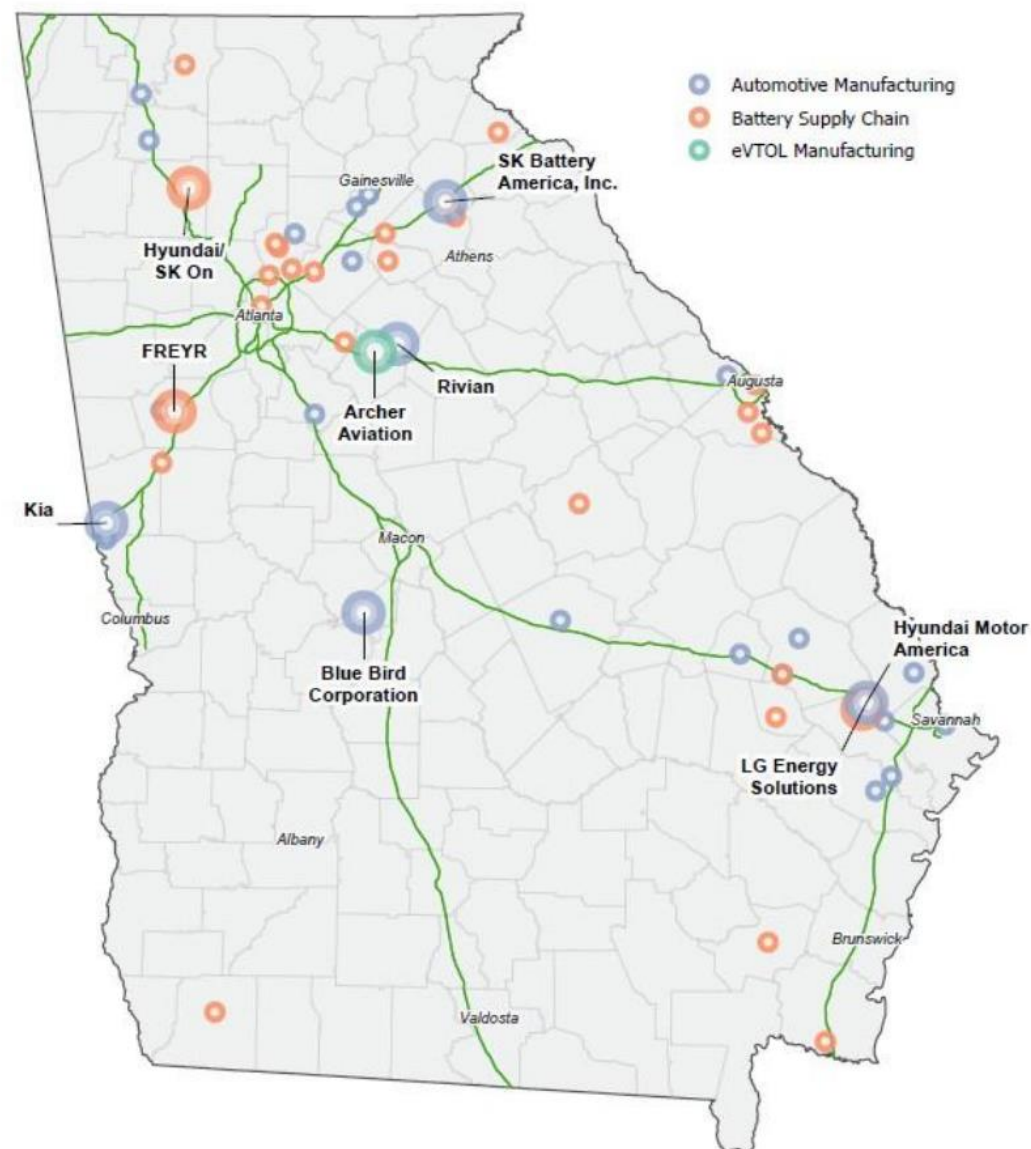
Andrew Heath, P.E.
Deputy Chief Engineer
October 18, 2023

Overall Economic Development Picture

“Electric Mobility Capitol of America” –
Governor Kemp, Inaugural Address

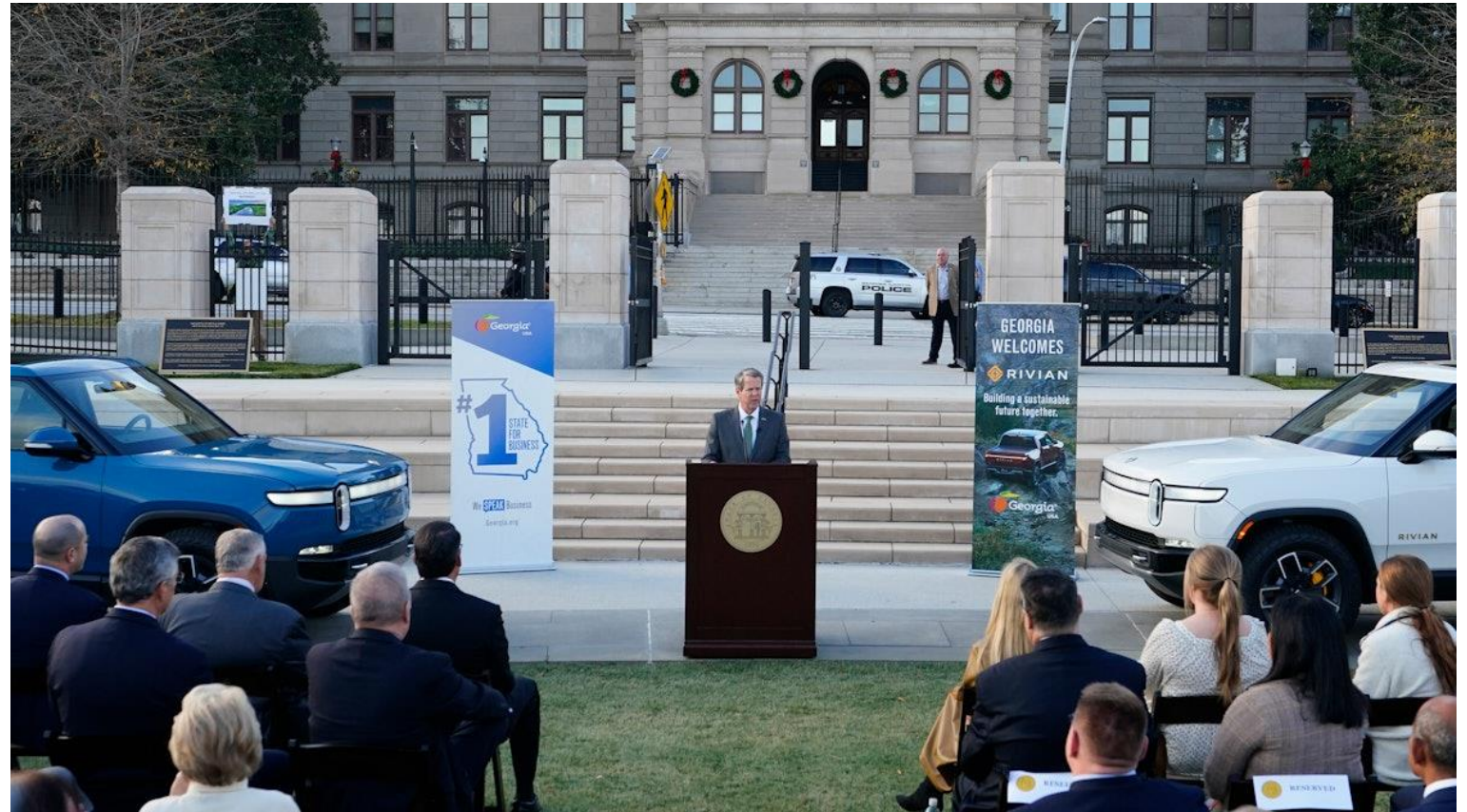
Over the last 5 years:

- 45 E-Mobility Projects To Date
- \$25B in Investment
- Over 30,000 Jobs
- Rivian, Hyundai, Hyundai Mobis, SK Battery, SK On/Hyundai, Freyr, Blue Bird, Archer, etc

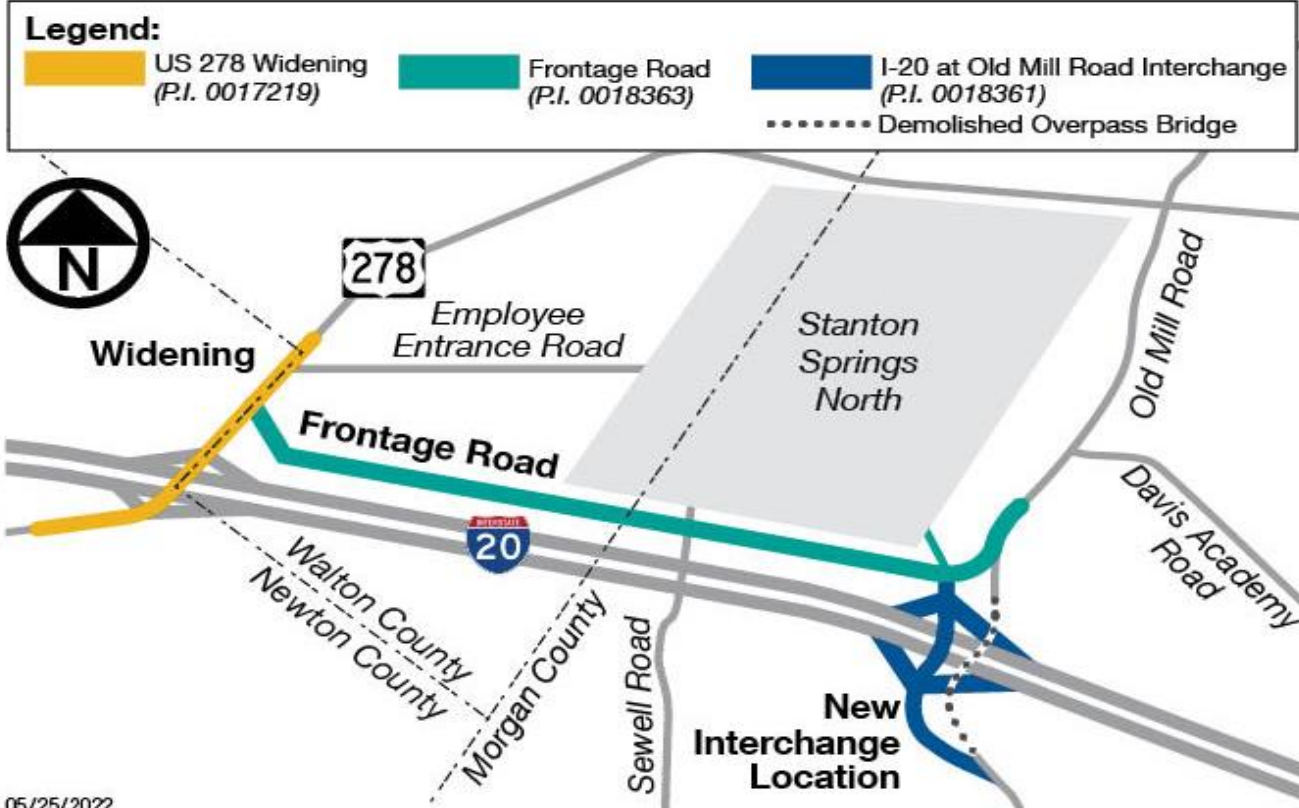


Rivian Announcement and Basic Facts

- At time, Largest Economic Development Project in GA History (Dec. 2021)
- 7,500 Jobs
- \$5.0B Investment
- 400,000 EVs produced annually

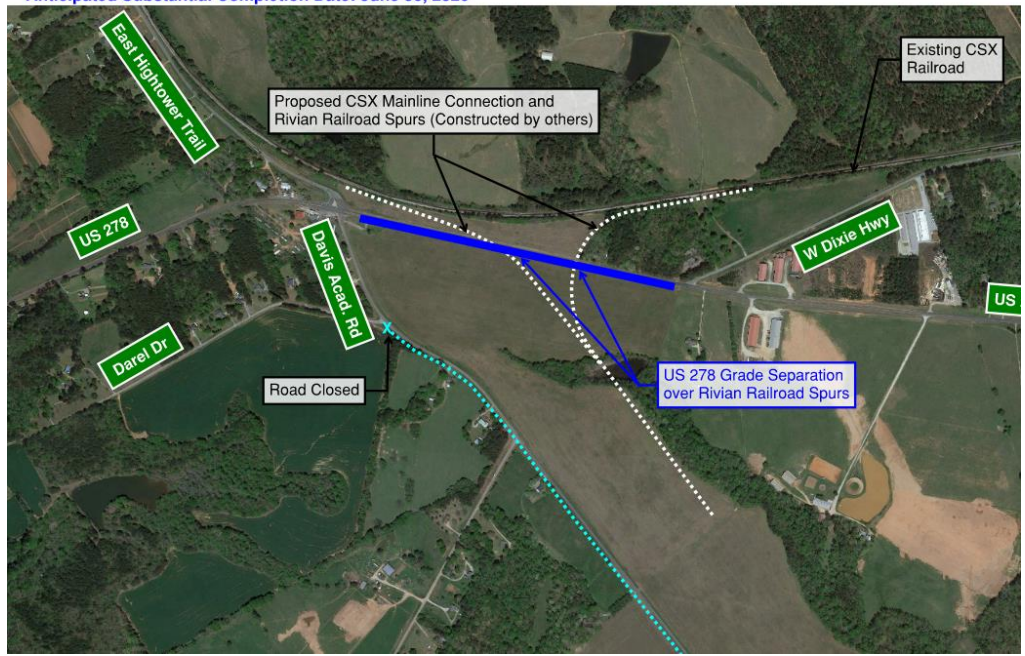


East Atlanta Mega-Site Roadway Investments



05/25/2022

US 278 Grade Separation Over Railroad Spurs
(PI 0019253)
Anticipated Substantial Completion Date: June 30, 2026







US 278 Widening

PI 0017219



This project will widen US 278 from Shire Parkway to Willow Springs Church Road.

Project Awarded to: CW Matthews as Lead Contractor and Infrastructure Consulting & Engineering as Designer

Anticipated Completion: June 30, 2024

I-20 Frontage

PI 0018363



This project will construct a new 4-lane frontage road from US 278 to Old Mill Road parallel to I-20.

Project Awarded to: CW Matthews as Lead Contractor and Infrastructure Consulting & Engineering as Designer

Anticipated Completion: June 30, 2024



I-20 Frontage



I-20 Frontage



I-20 @ Old Mill Road Interchange

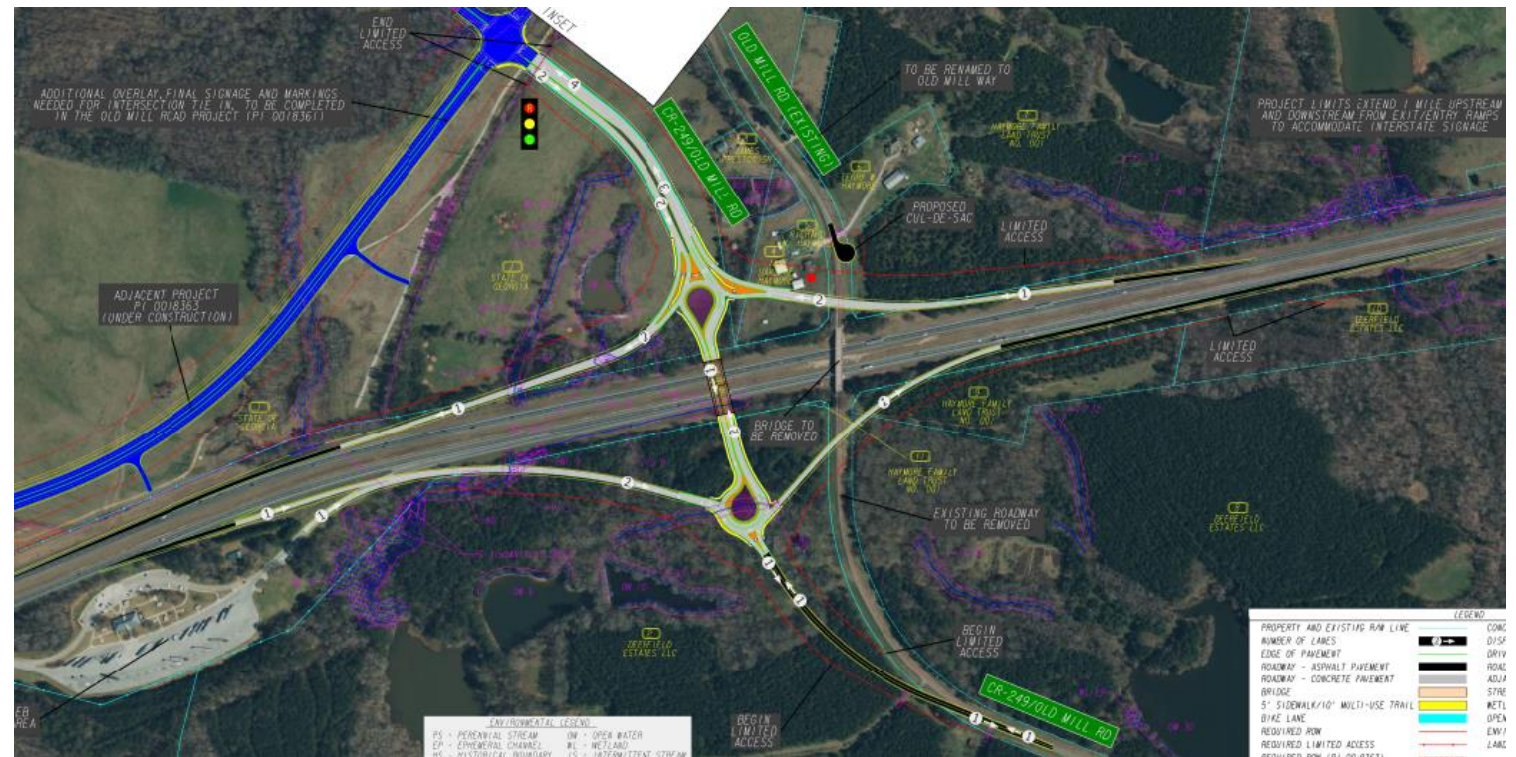
PI 0017219

This project will construct a new interchange at I-20 and Old Mill Road including two roundabouts at the interchange ramps and provide a connection to the new Frontage Road.

Project Bid Opening: October 2023

Anticipated Construction Start: Q1 2024

Anticipated Completion: Q3 2025



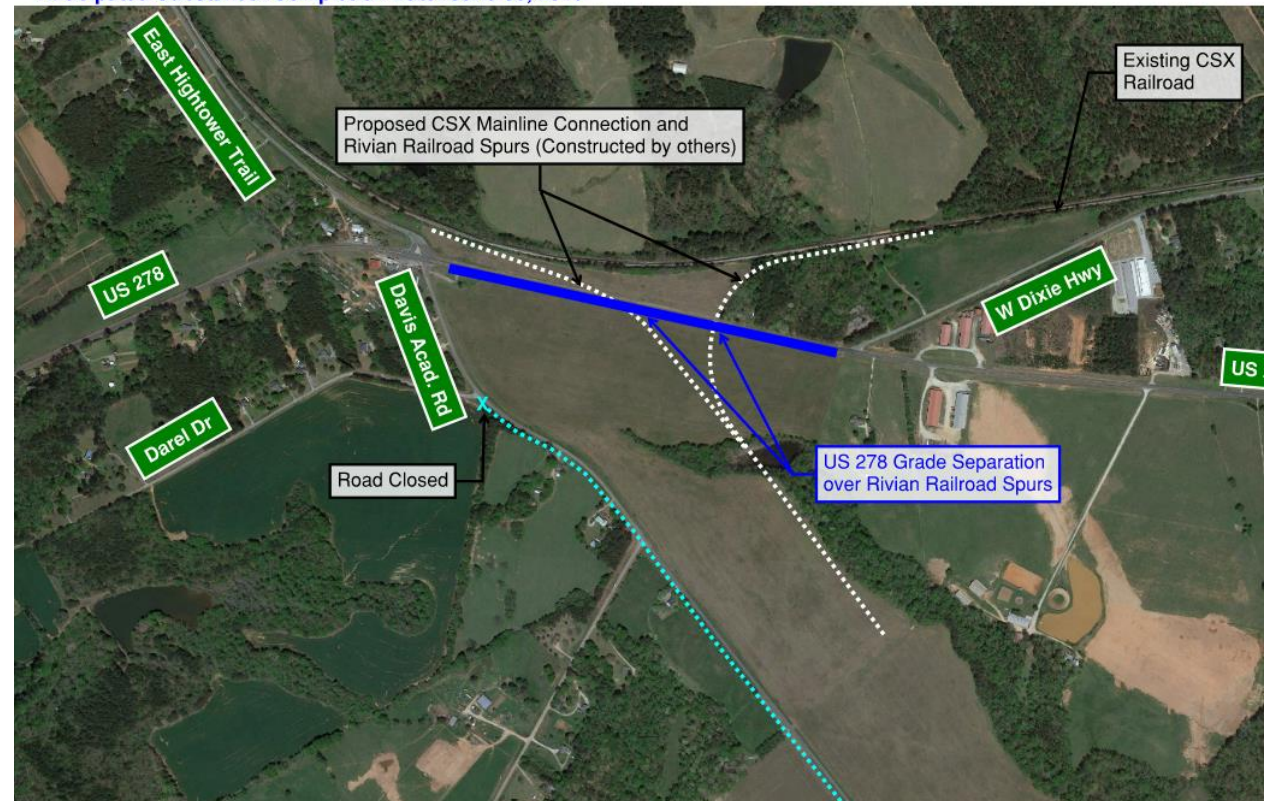
US 278 Railroad Crossing

PI 0019253

This project construct a grade separation on US 278 at proposed Railroad spurs servicing the megasite.

Anticipated Project Bid Opening: TBD
Anticipated Construction Start: TBD
Anticipated Completion: Q2 2026

US 278 Grade Separation Over Railroad Spurs
(PI 0019253)
Anticipated Substantial Completion Date: June 30, 2026



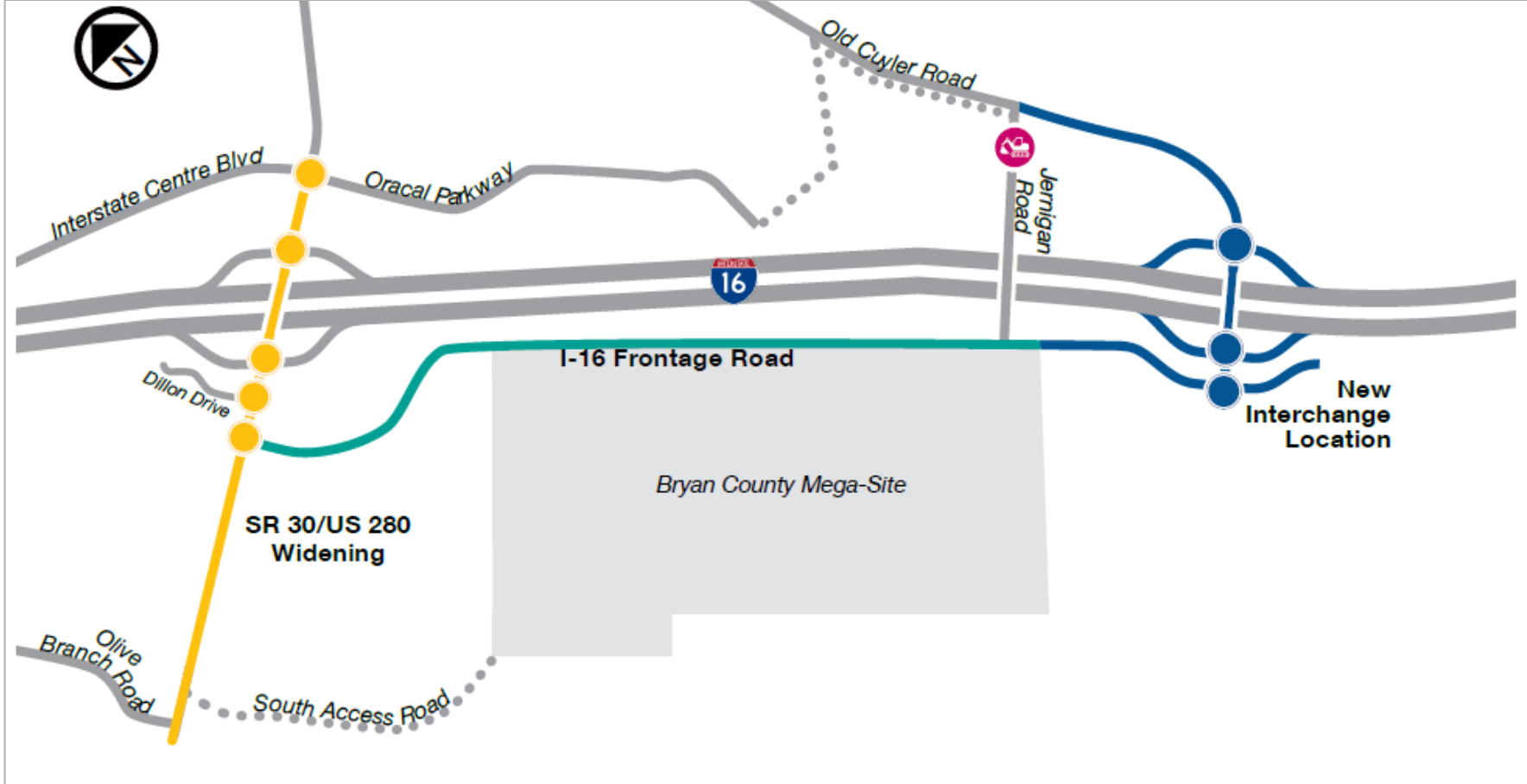
Hyundai Announcement and Basic Facts

- Largest Economic Development Project in GA History (May 2022)
- 8,500 Jobs
- \$7.5B Investment
- 300,000 EVs produced annually



Source: Hyundai

Bryan County Mega-Site Roadway Investments







I-16 Frontage Road

PI 0019452



This project will construct a 4-lane frontage road along eastbound I-16 connecting the I-16/US 280 Interchange to the new I-16 at Old Cuyler Road Interchange.

Project Awarded to: Matthews-McClendon JV as Lead Contractor and Infrastructure Consulting & Engineering, PLLC as Designer
Anticipated Completion: December 31, 2024

SR 30/US 280 Widening

PI 0016618



This project will widen SR 30/US 280 and construct roundabouts at the I-16/US 280 Interchange ramps, Oracal Parkway, Dillon Drive, and the new I-16 Frontage Road.

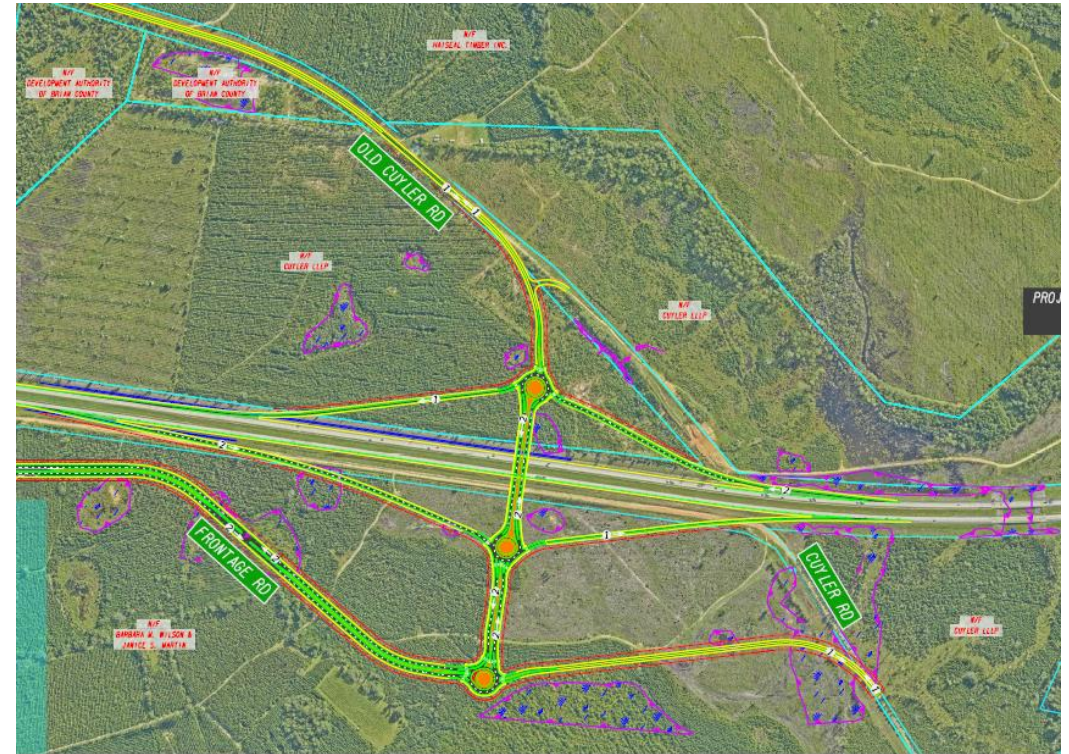
Project Awarded to: Matthews-McClendon JV as Lead Contractor and Infrastructure Consulting & Engineering, PLLC as Designer

Substantial Completion: December 31, 2025

Interim milestone from I-16 WB Ramps to South Access Road: March 31, 2025

I-16 at Old Cuyler Road Interchange

PI 0019451



This project will construct a new interchange at I-16 and Old Cuyler Road including two roundabouts at the interchange ramps and one at the intersection with the I-16 Frontage Road.

Anticipated Project Bid Opening: Q3 2024

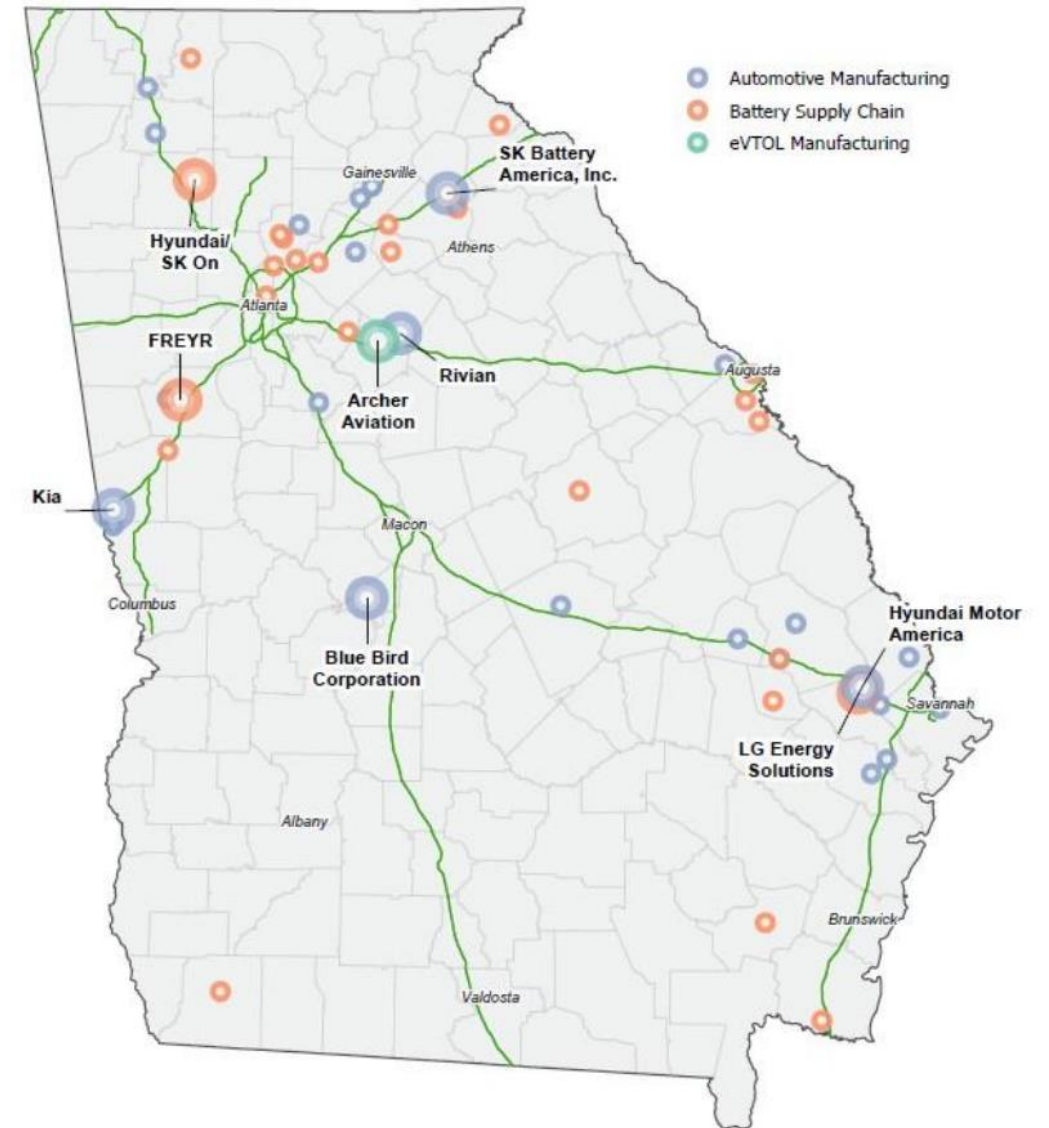
Anticipated Construction Start: Q2 2025

Anticipated Completion: March 31, 2027

Overall Economic Development Picture

**“Georgia Breaks Economic
Development Records for Third Year in
a Row”**

**“Georgia No. 1 State for Business for
10th Consecutive Year”**



Questions?

THANK
YOU



OEM Overview

Jeff Stone
State Equipment Administrator
Office of Equipment Management (OEM)
October 18, 2020

OEM Responsibility

- Conception to Surplus
- Fleet Operational Policies
- State Motor Pool
- HERO Fleet Support
- DOT CDL Program
- Emergency Response
- District Shop Support
- Manage The State's Largest Fleet



OEM Accomplishments

- CDL Program
- Purchasing Multi-use Vehicles & Equipment
- Redistribution of underutilized vehicles and equipment
- Provide excellent customer service to Offices and Districts
- Training on the PM Manual
- Maintained Brine Operation at MAU
- Emergency response
- Reduction of the fleet



CDL Training/Testing

FY 22

Tested 227 employees
134 Passed (Pass rate 59%)
93 Failed

FY 23

Tested 251 employees
153 Passed (Pass Rate 61%)
98 Failed

FY 24 to date

Tested 73 employees
61 Passed (Pass Rate 84%)
14 Failed

Fleet Reduction

- Reduction of the Fleet in the last 10 years
- The fleet went from 11,873 units to current 7,900 a 33.5% reduction (3,973 units)
- FY20 thru FY23 the department has sold over 1,691 units with a return back into the fleet program of \$6,765,788.00

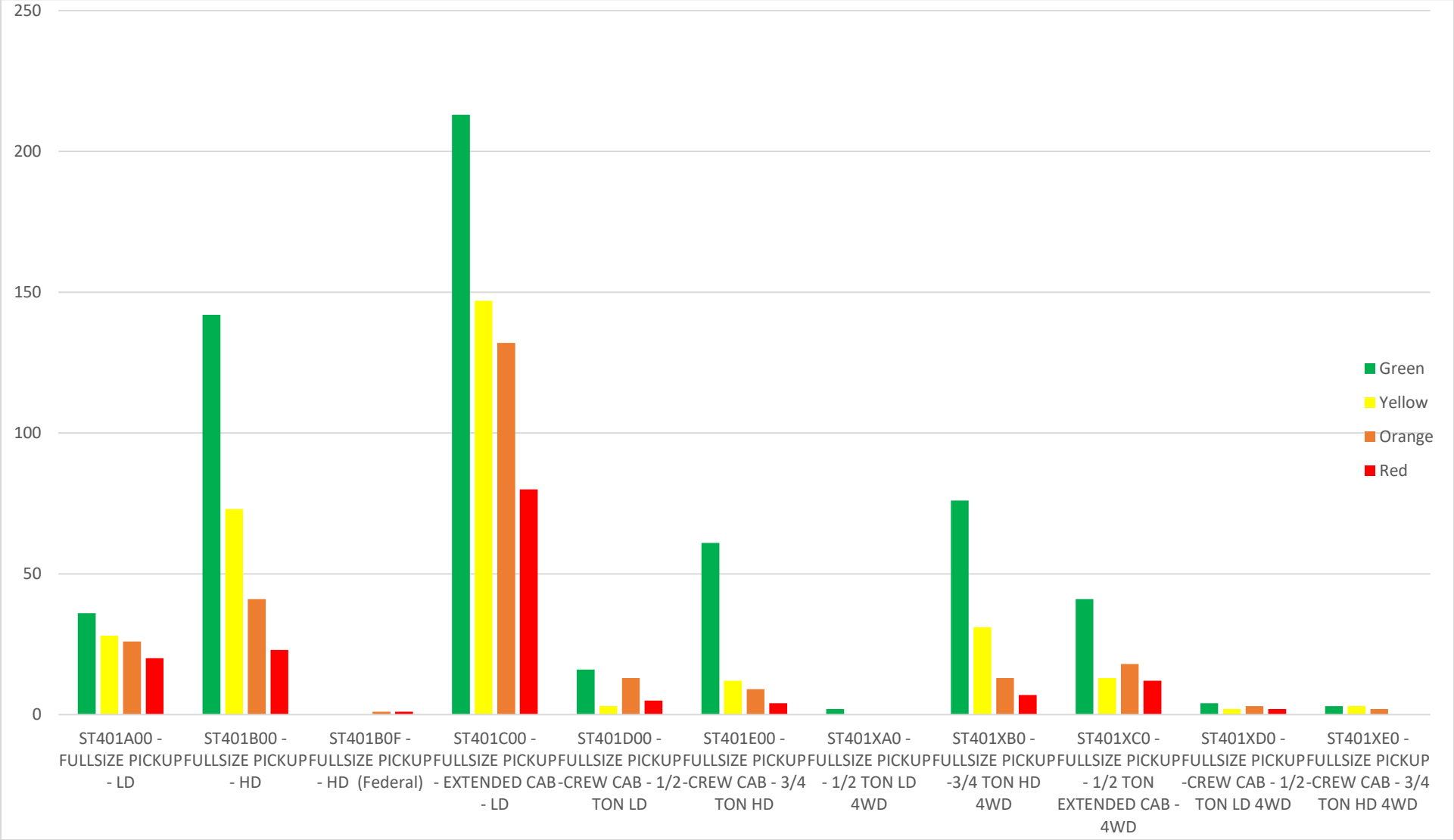


OEM's Fleet Evaluation

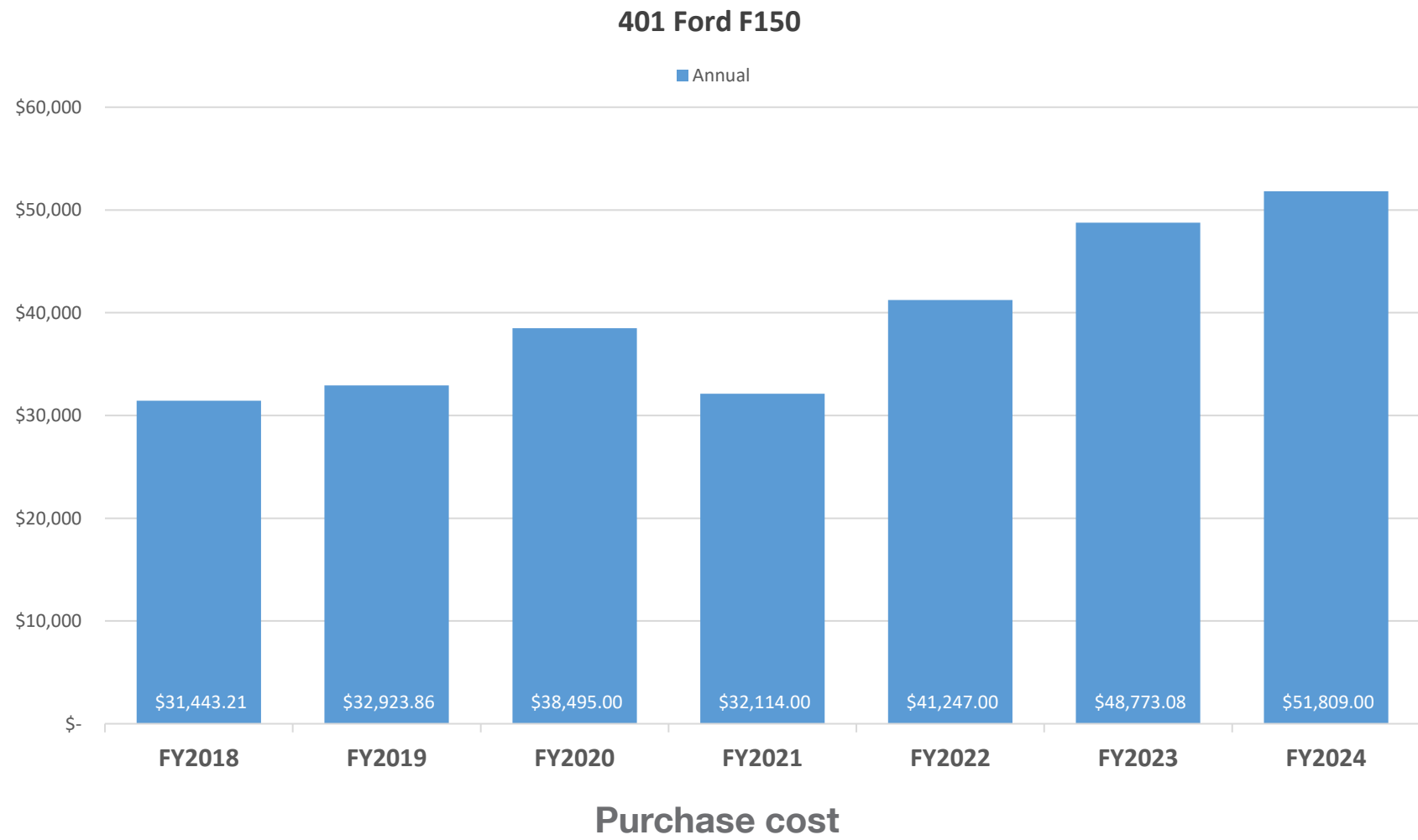
- Yearly Evaluation
- Rating System
- Mileage
- Repair/Operational Cost



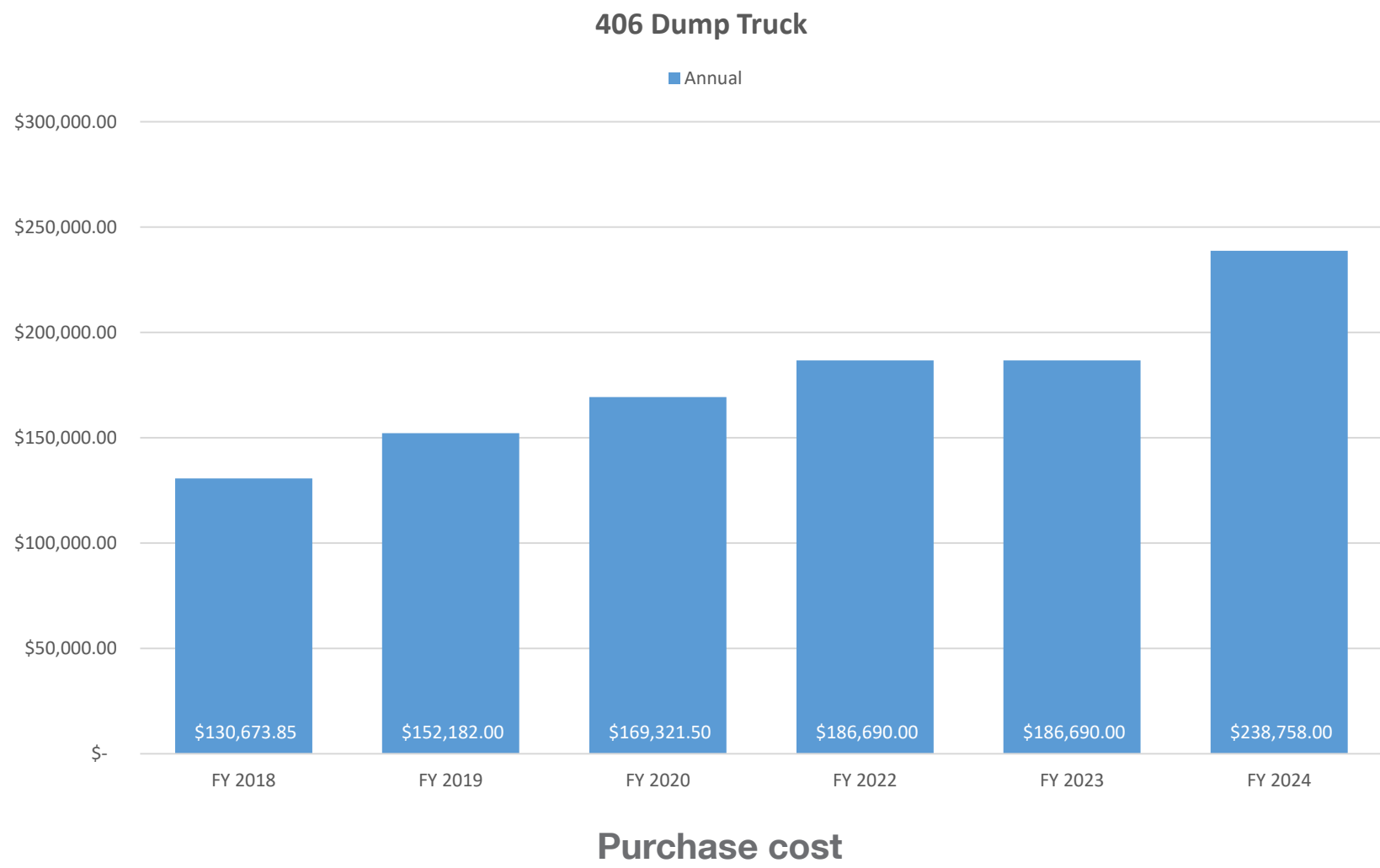
Current 401 Pickups



401 Historical Data Cost



406 Historical Data Cost



Prior Year Funding



FY19- 19 Million
386 Pieces
Purchased

FY20- 19 Million
556 Pieces
Purchased

FY21- 9.5 Million
270 Pieces
Purchased

FY22- 9.5 Million
193 Pieces
Purchased

FY2024 Budget - 22.5 Million

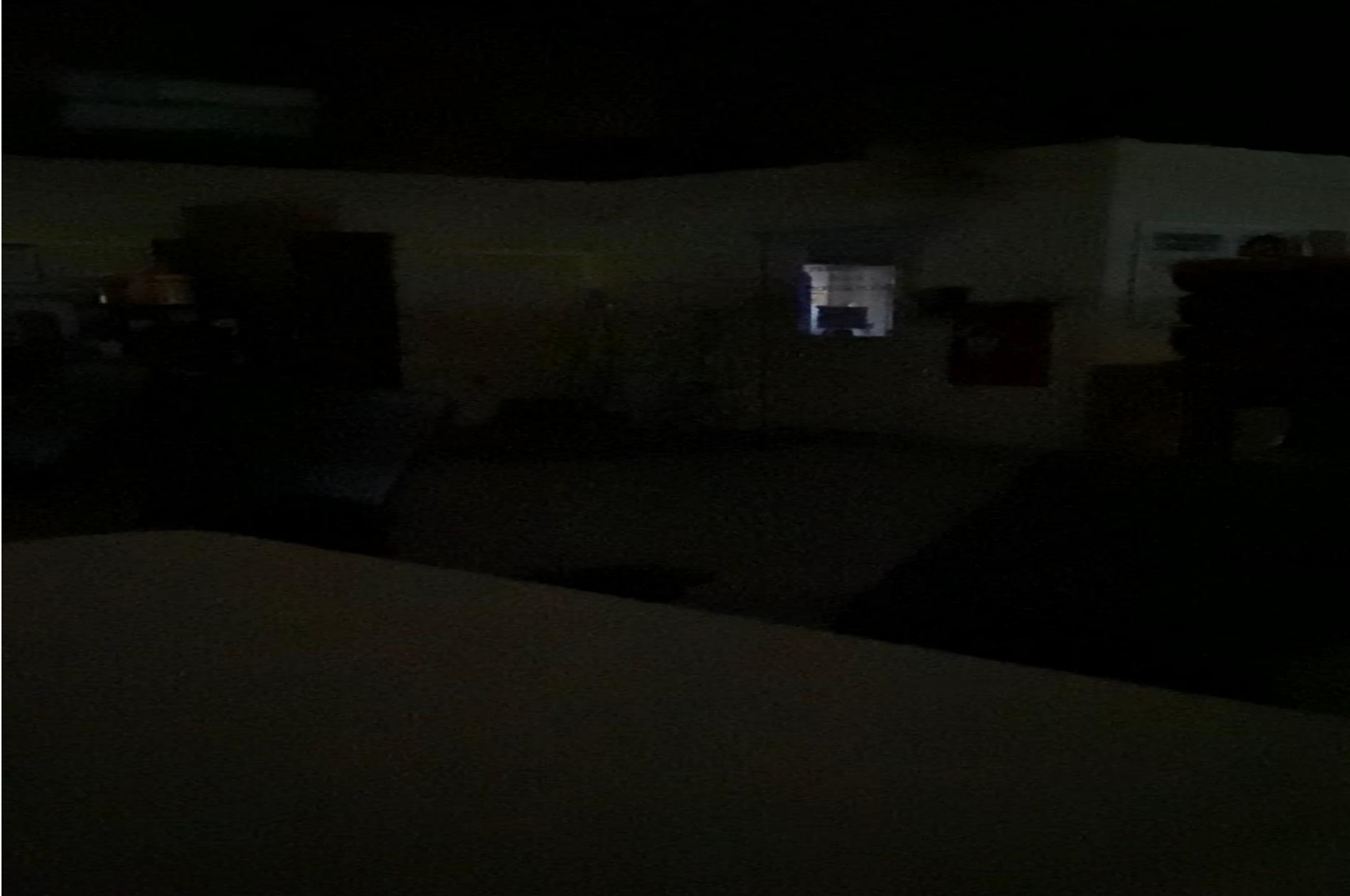
Due to the increase cost of Equipment and Vehicles OEM has strived to purchase the needs of the Department and not wants. We will purchase approximately **183** pieces this Budget year, with **41** being Dump Trucks & 3 specialized pieces.



Fleet Overview

| Category | UNITS |
|--|-------|
| Tandem/Singles Dump trucks | 41 |
| Lite & Heavy Ride (trucks , Buckets, cars, etc.) | 90 |
| Equipment (Loaders, backhoe,etc.) | 49 |
| Specialized Equipment (Milling Machine & 2-Pavers) | 3 |
| | |
| Totaling | 183 |
| | |
| | |
| | |

Safety First



Thank You For Your Support



Questions?

THANK
YOU



STATE TRANSPORTATION BOARD

OCTOBER 2023 COMMITTEE MEETINGS

October 18, 2023